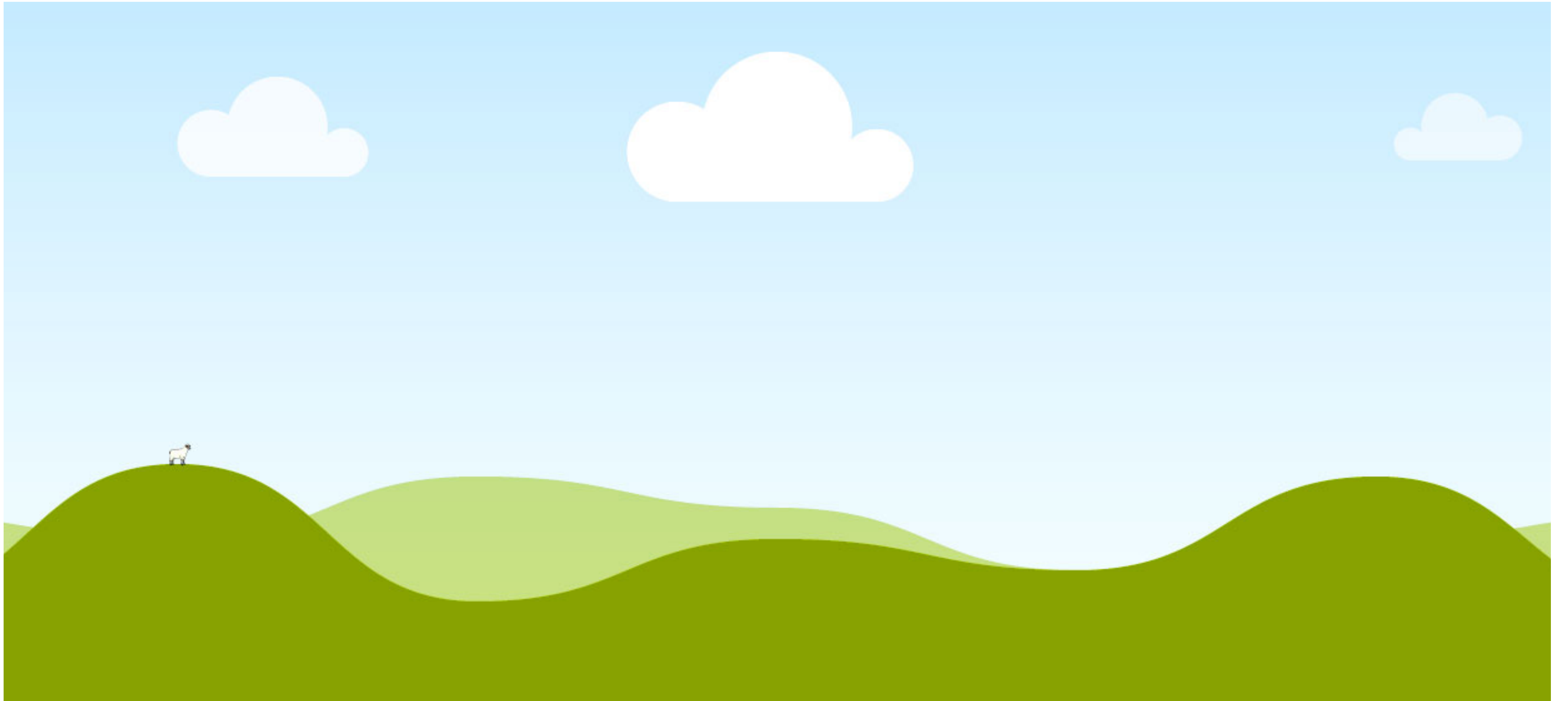


# **What does the future hold? Despair or Opportunity?**

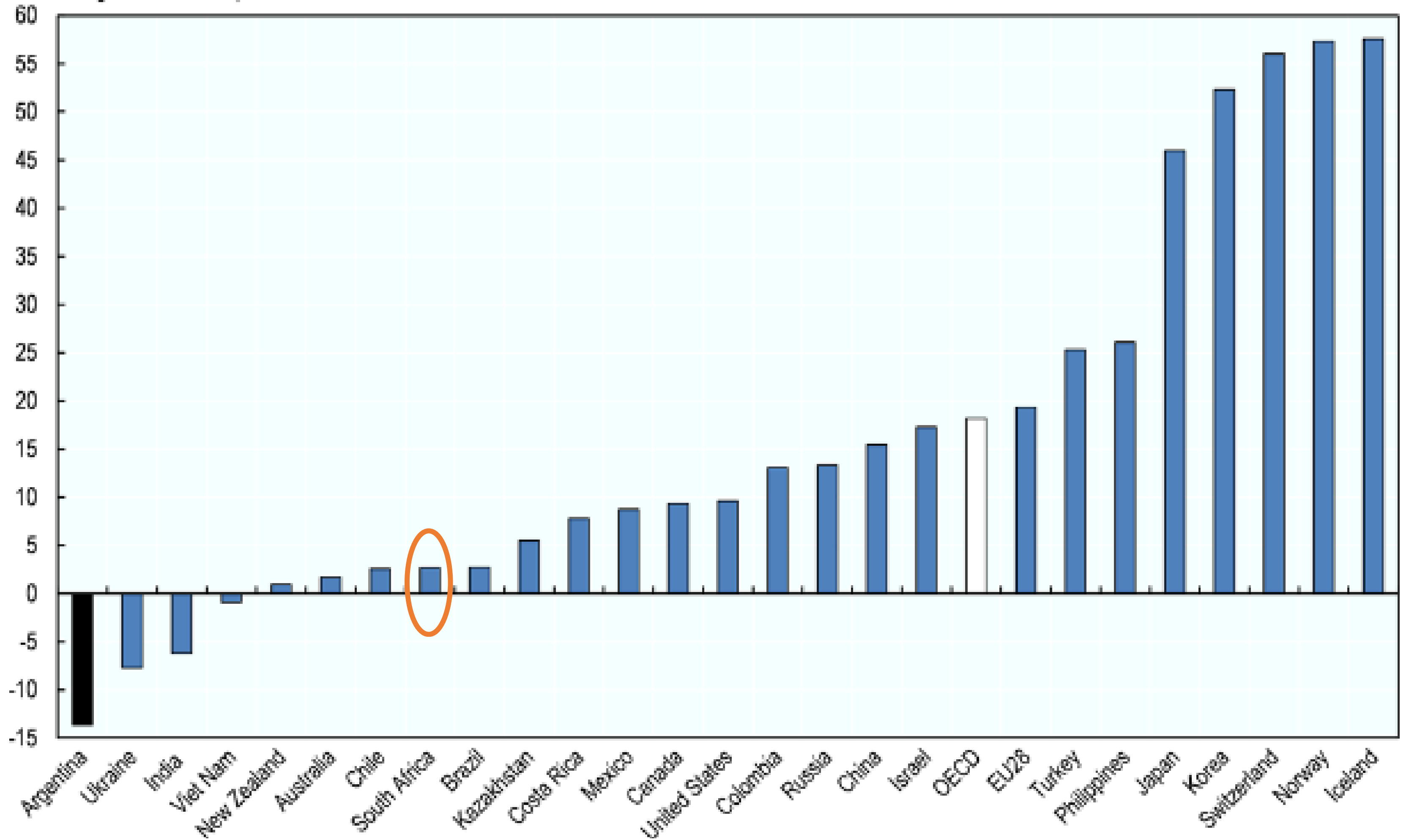
Prof Christo van der Rheede





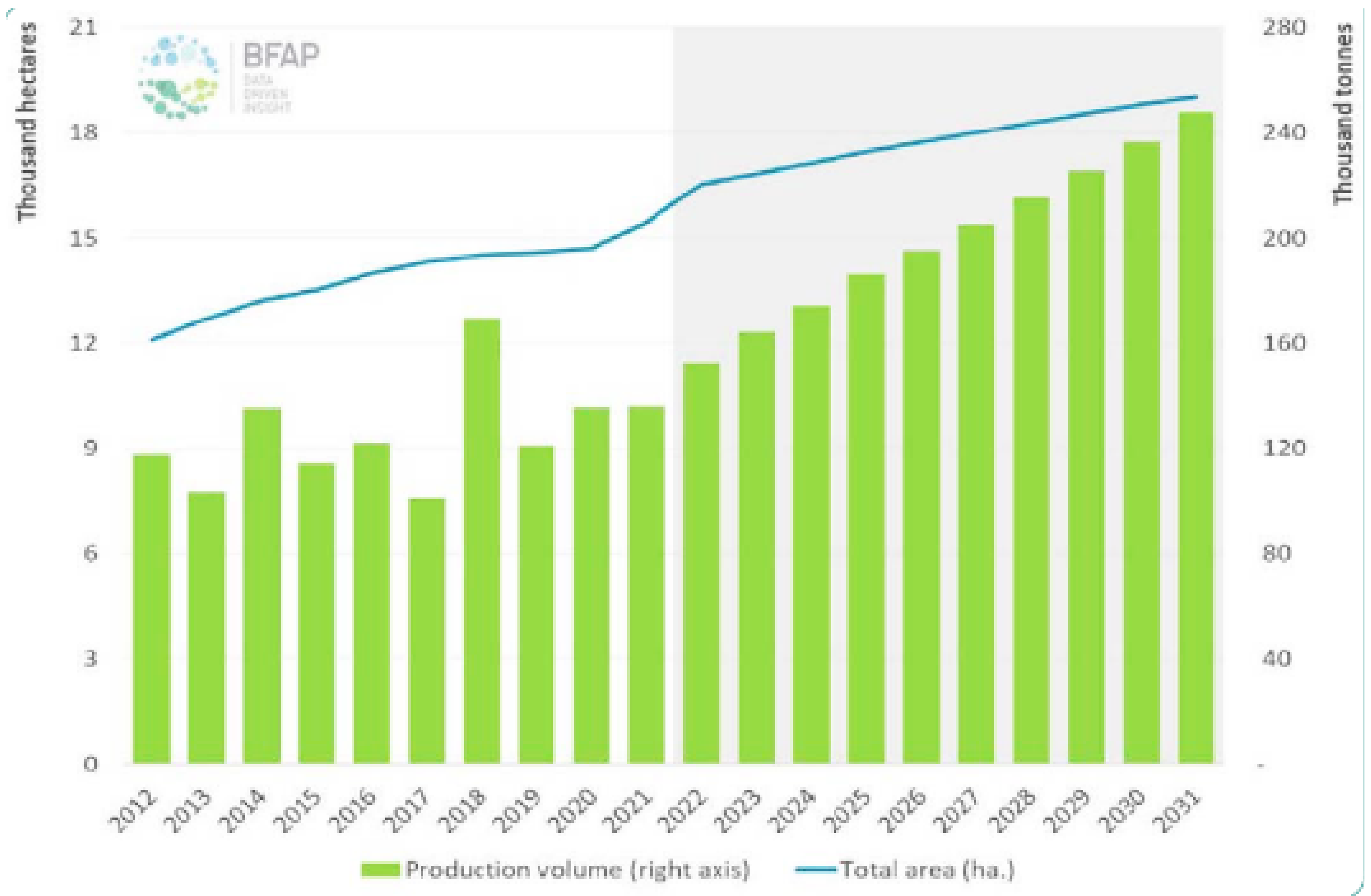


% of gross farm receipts

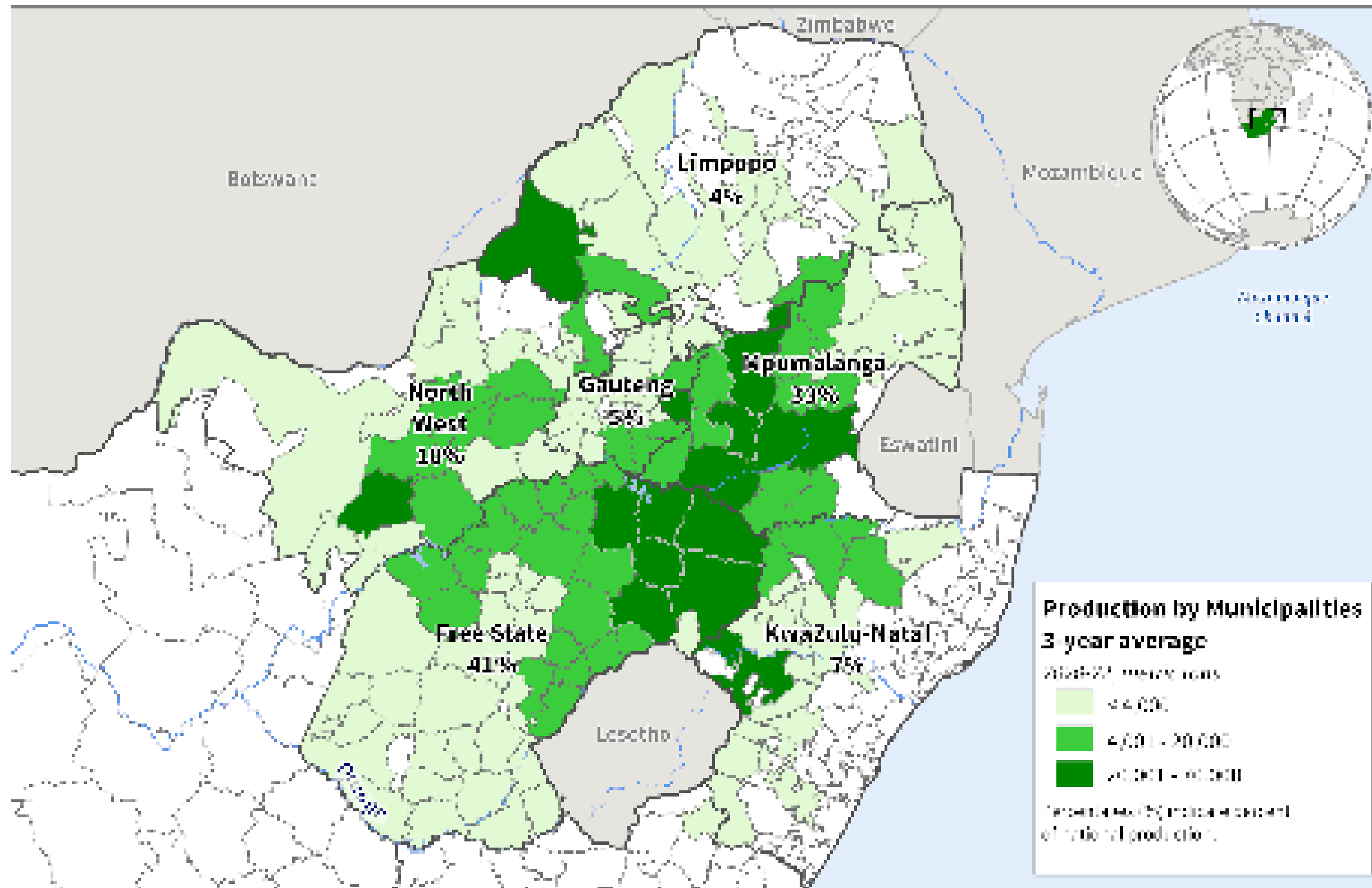


# FRUIT REGIONS IN SOUTH AFRICA





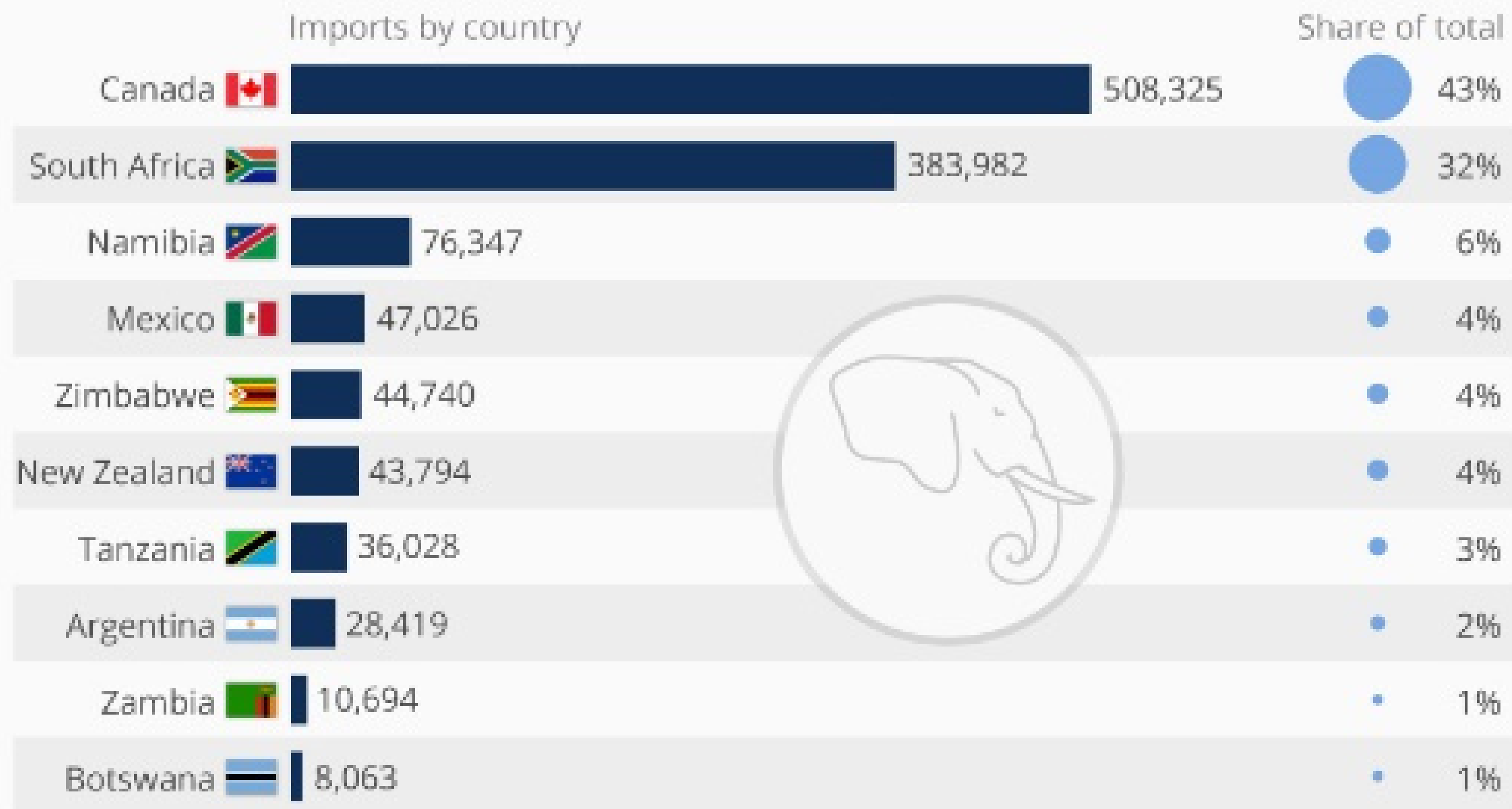
# South Africa Soybean Production





# The Top Countries For U.S. Trophy Hunters

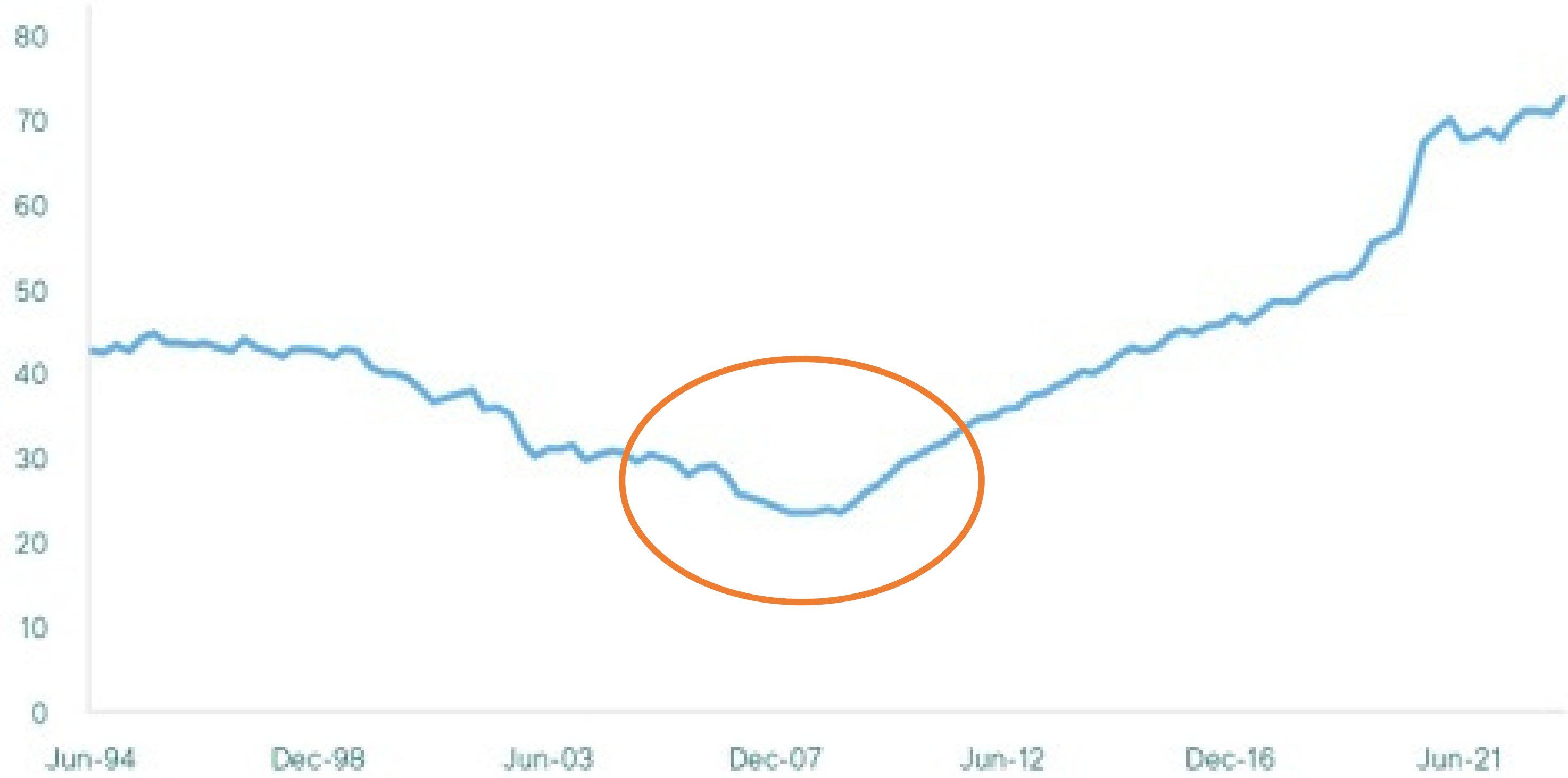
Top countries of origin of animals imported as trophies to the U.S. (2005-2014)



@StatistaCharts

Source: The Humane Society Of The United States

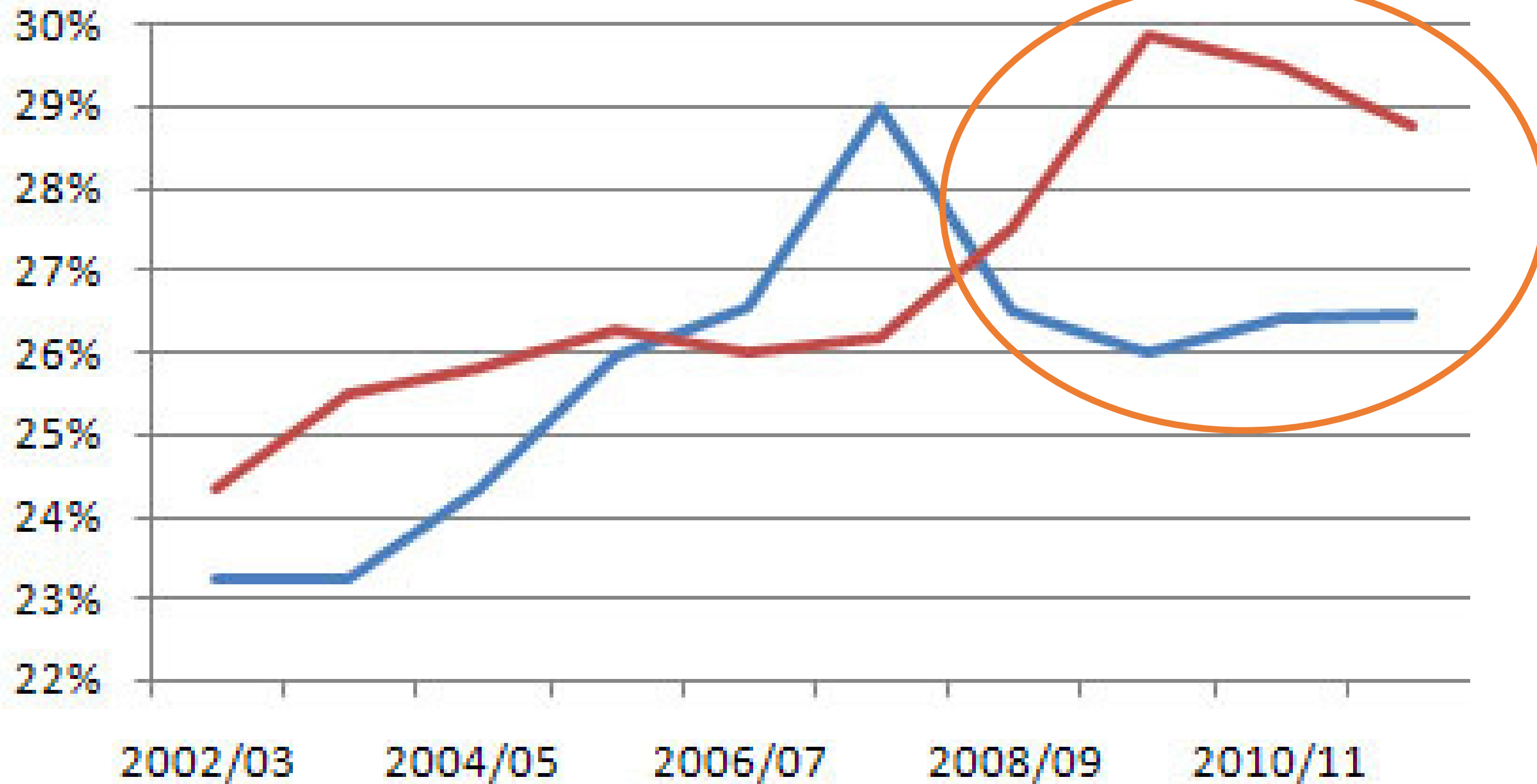
Graph 1: South Africa's debt-to-GDP ratio has been climbing since 2008  
(Debt to GDP %)



Source: M&G Investments, SARB

# Government revenue and expenditure as % of GDP

— Revenue — Expenditure



**CONSOLIDATED  
GOVERNMENT  
EXPENDITURE**

**R2.24 TRILLION**

**R1.35 TRILLION**

**SOCIAL  
SERVICES**



**R237.6 bn**

**ECONOMIC  
DEVELOPMENT**

Economic regulation and infrastructure **R124.9 bn**

Industrialisation and exports **R40.5 bn**

Agriculture and rural development **R27.8 bn**

Job creation and labour affairs **R24.6 bn**

Innovation, science and technology **R19.8 bn**

Basic education **R293.7 bn**

National Student Financial Aid Scheme **R50.1 bn**

University transfers **R45.1 bn**

Skills development levy institutions **R24.3 bn**

Education administration **R18.5 bn**

Technical & vocational education and training **R13.3 bn**



**R457.1 bn**

**LEARNING  
AND CULTURE**



**R340.5 bn**

**DEBT-SERVICE COSTS**



**R5.0 bn**

**CONTINGENCY RESERVE**

Old-age grant

**R99.1 bn**

Social security funds

**R92.4 bn**

Child-support grant

**R81.9 bn**

Other grants

**R72.9 bn**

Provincial social development

**R21.4 bn**

Policy oversight and grant administration

**R10.9 bn**



**R378.5 bn**

**SOCIAL  
DEVELOPMENT**



*'We slaughter one another in our words and attitudes. We slaughter one another in the stereotypes and mistrust that linger in our heads, and the words of hate we spew from our lips. We slaughter one another in the responses that some of us give to efforts aimed at bettering the lives of the poor. We slaughter one another and our country by the manner in which we exaggerate its weaknesses to the wider world, heroes of the gab who astound their foreign associates by their self-flagellation. This must come to an end. For, indeed, those who thrive on hatred, destroy their own capacity to make a positive contribution.'*

President Nelson Mandela: Opening of Parliament 1999